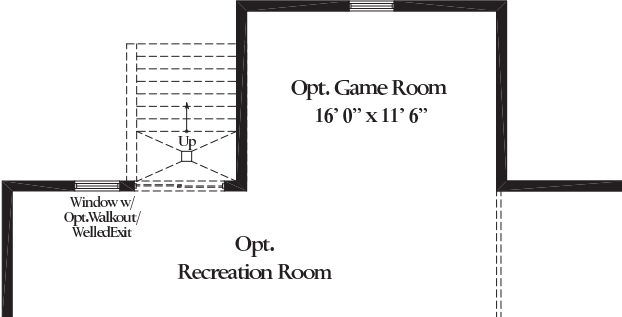
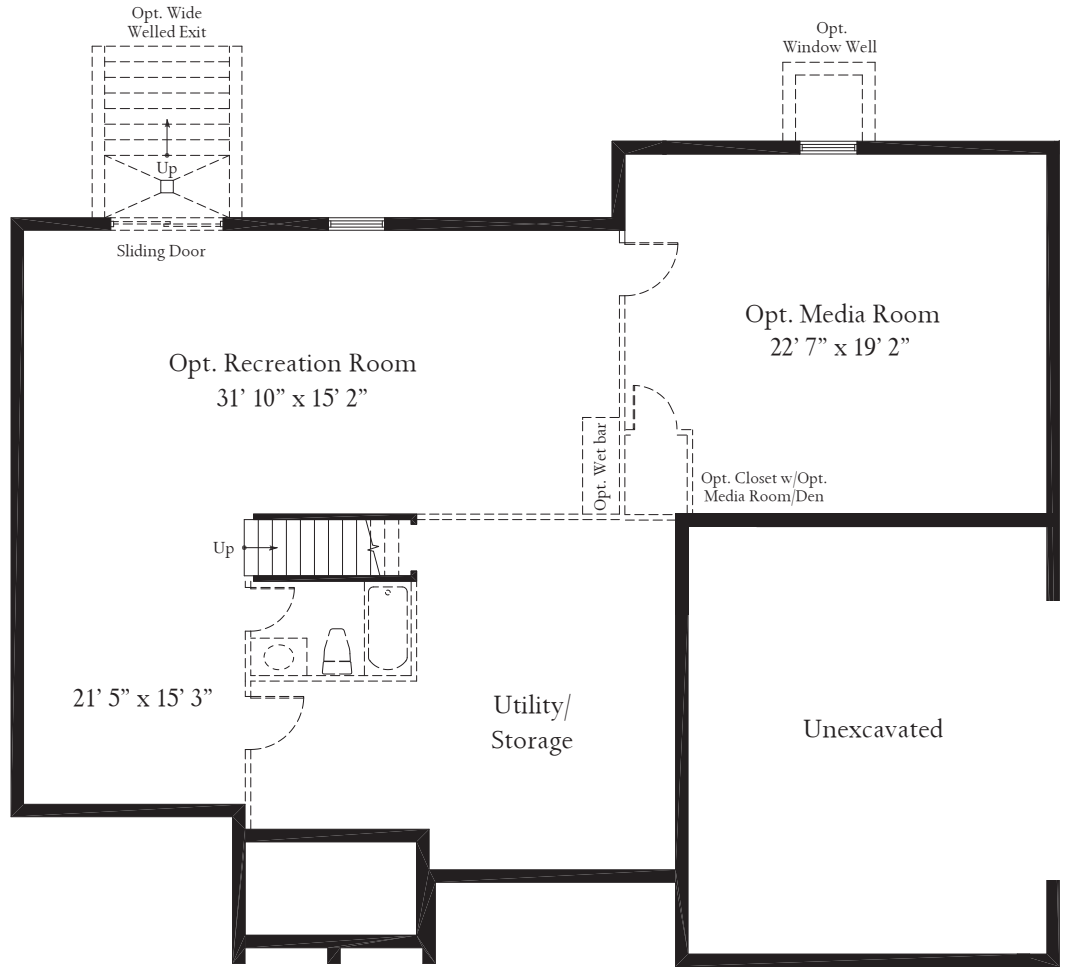


The Chelsey



Partial lower level with opt. morning room



LOWER LEVEL



{ Elevation 5 }

You will find charm everywhere you look in *The Chelsey*, beginning with a sunlit 2-story foyer that introduces the main level of the home. A private library sets itself apart, while the living room flows directly into the elegant dining room. At the back of the home, the well-appointed kitchen and breakfast nook open to a spacious family room. Upstairs, the palatial owners suite features dual walk-in closets and light-filled garden bath with separate shower, soaking tub, and dual vanities.

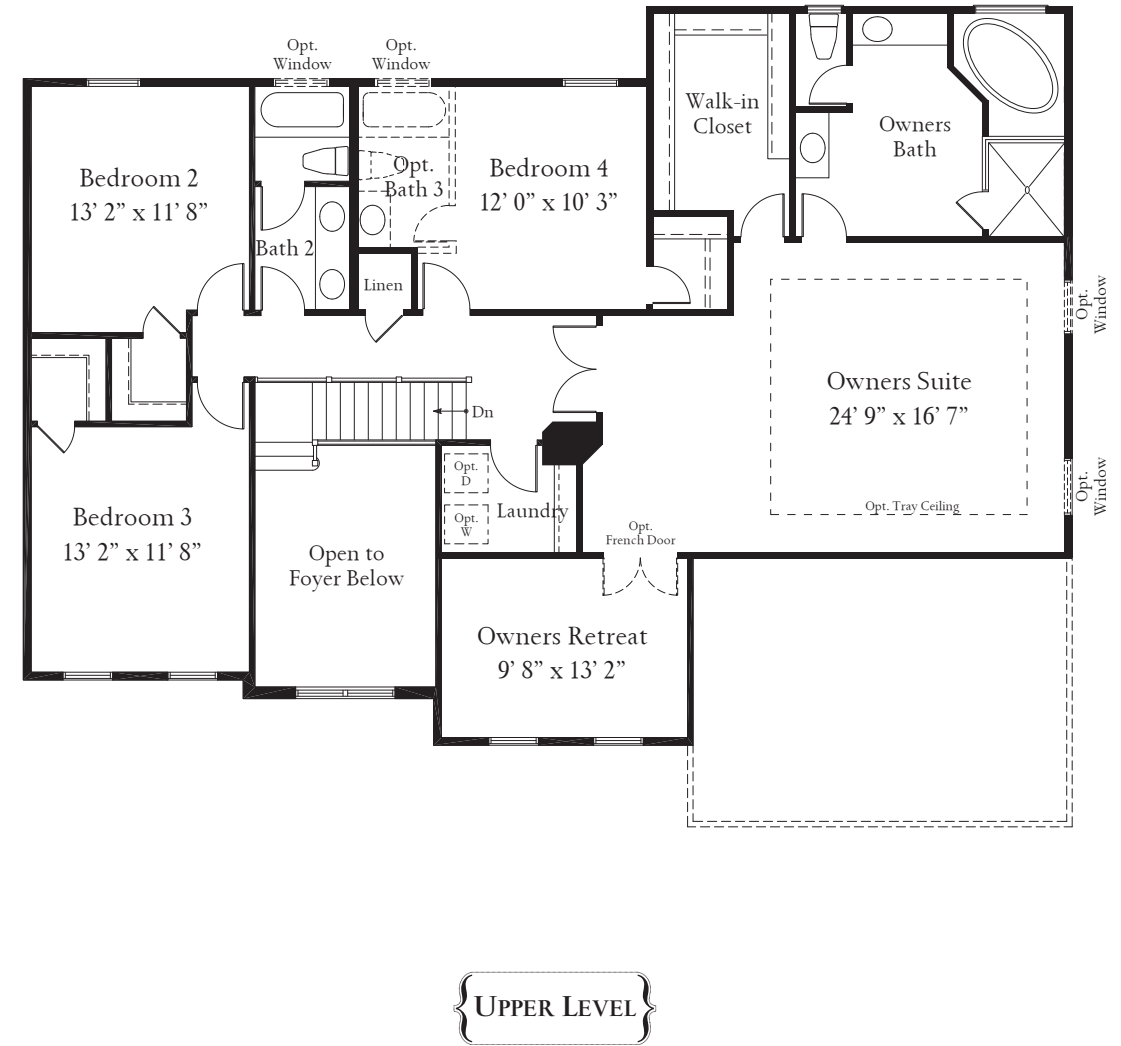
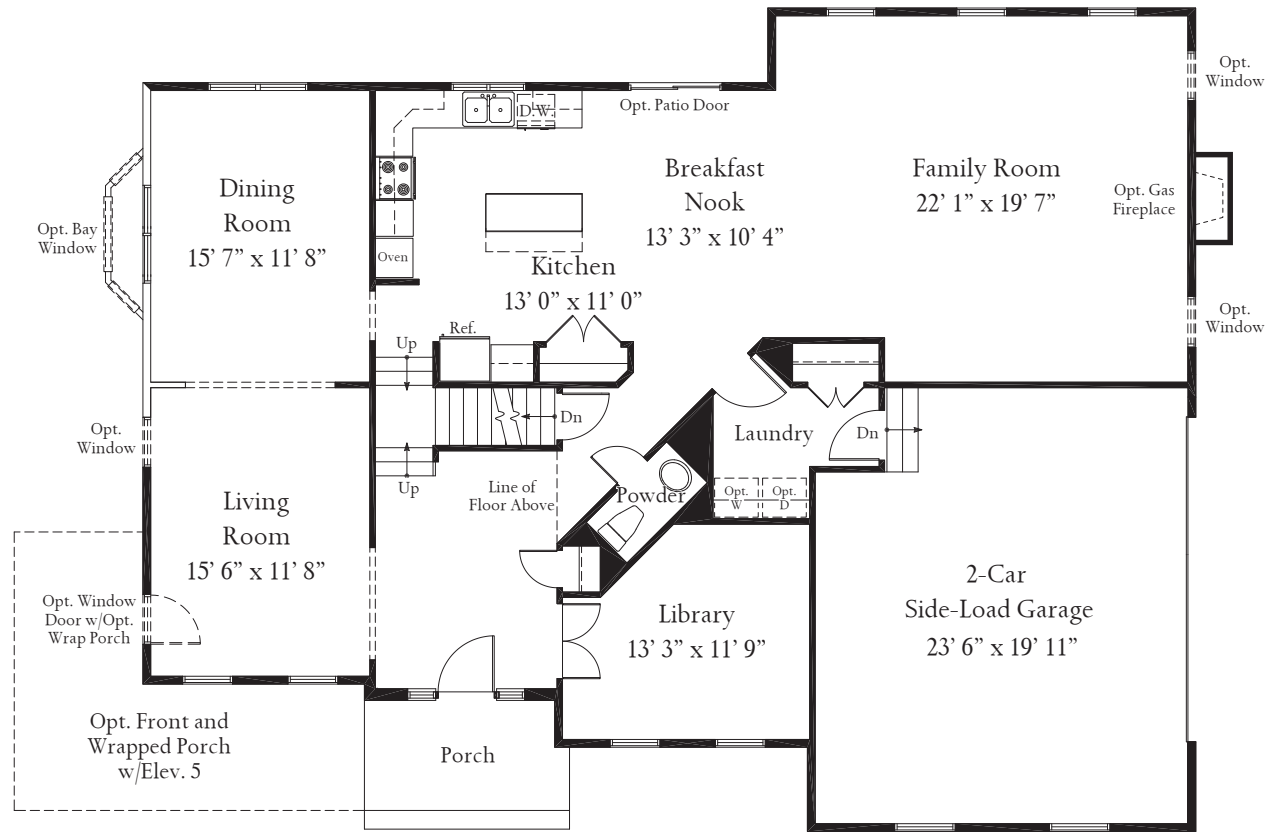
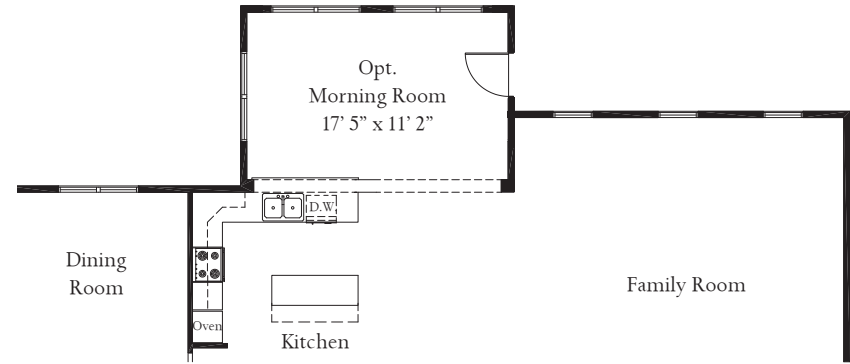
Elevation Drawings show Optional Features.

ATLANTIC BUILDERS
GIVING YOU MORE



ATLANTIC BUILDERS
GIVING YOU MORE

The Chelsey



These renderings and floorplans are conceptual only. Actual details may vary. This insert is for illustrative purposes only. Atlantic Builders' continuing research and development program means specifications and plans are subject to change without notice. Standard features vary per community. Please consult Community Sales Manager for details.